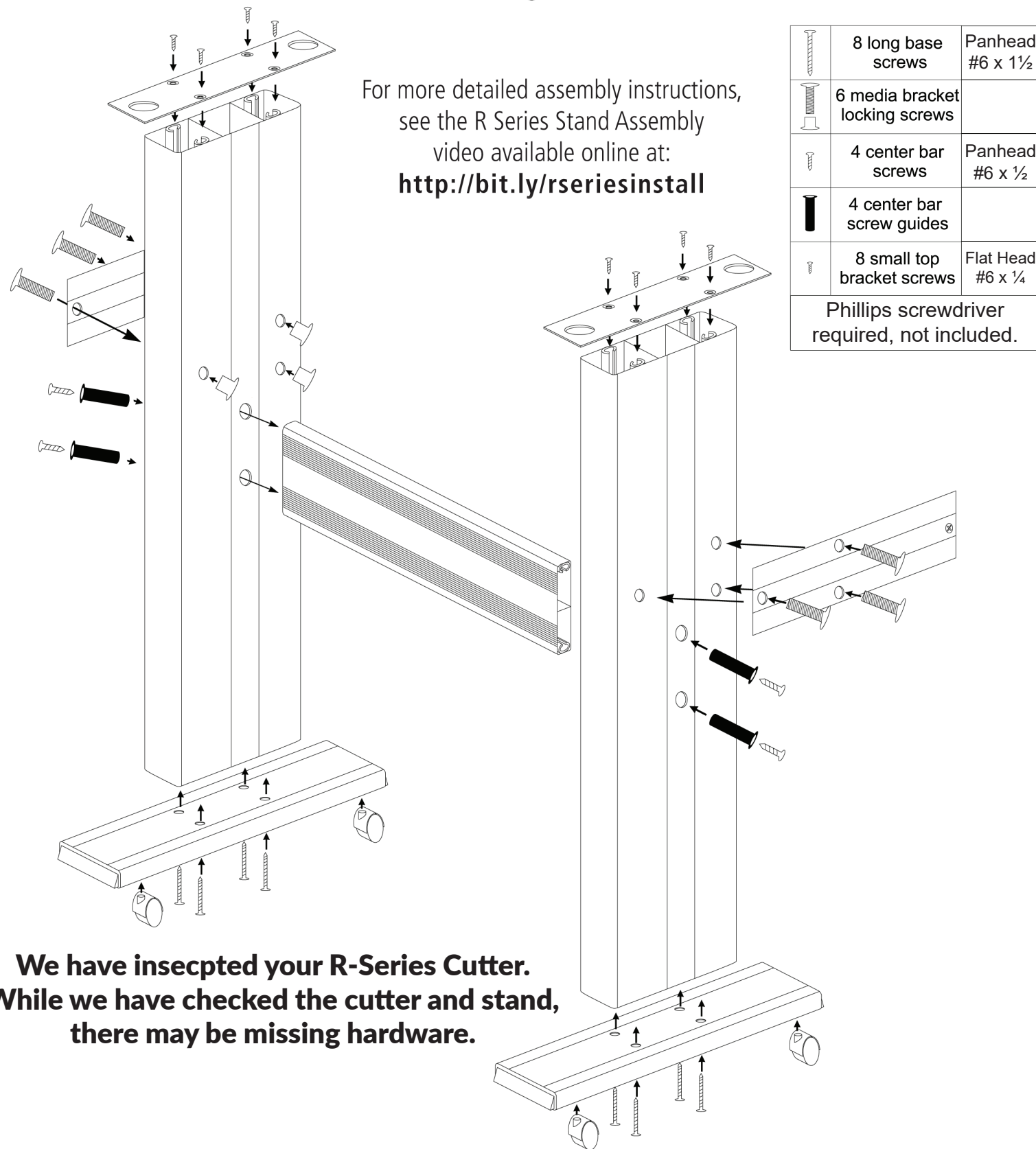


SIGNWarehouse® R Series Stand Assembly Instructions



SIGNWarehouse®

R-SERIES QUICK-START GUIDE

START HERE:

<https://bit.ly/rseriesinstall>

The fastest way to get started is to watch the online Setup Video.

1.

Assemble the stand.

If you watch the online video, you will see which part goes where and in what order. (Or see the diagram on page 4 of this quick-start guide.)

2.

Install the software.

Your package includes a sealed envelope with instructions on how to setup your SAI Cloud account, download, install, and activate your LXI 12 software. These instructions are also found in the online Rogue Setup Video.



3.

Use your smart phone to scan this QR code. The code will take you to our tech support blog over the LXI tutorials and training videos. This blog will help set up and answer questions that you may have about your LXI software. If you don't have a smart phone, you can visit here, <https://bit.ly/3piWx0c>.



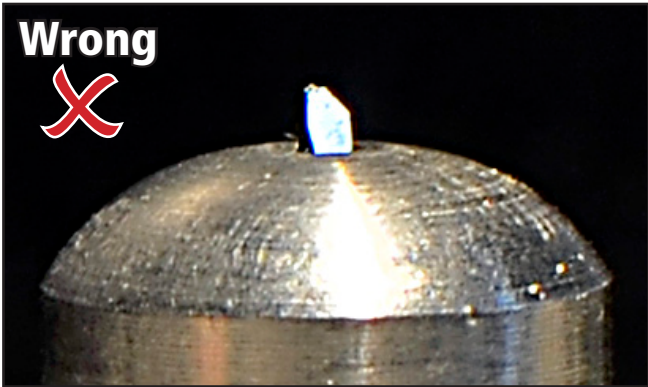
The R Series qualifies for SIGNWarehouse Customer Care's Basic Support plan. This includes full, unlimited access to the SIGNWarehouse support blog, knowledge base, setup, software tutorials, downloadable drivers, and more. Use the link above to view the setup video. To access all of the R Series support resources online, please browse to

<https://techsupport.signwarehouse.com/category/vinyl-cutters/vinyl-express/r-series-entry-level-vinyl-cutters/>

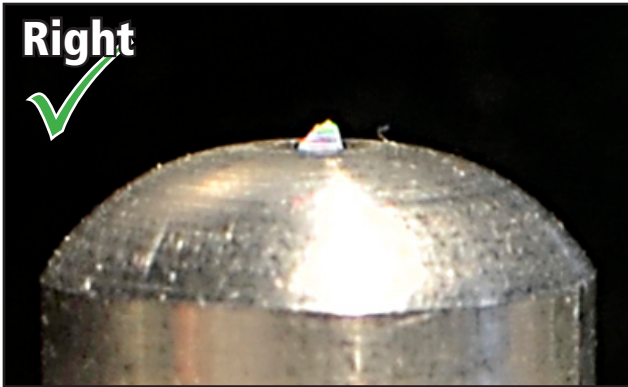
Direct assistance is also available from SIGNWarehouse Product support via email. If you cannot find the resources you need online, please contact us at SUPPORT@SIGNWarehouse.com

www.signwarehouse.com • SignWarehouse, Inc. • 2614 Texoma Drive, Denison, TX 75020
• support@signwarehouse.com • signwarehouse.com/pages/contact-us

How much blade should be showing?



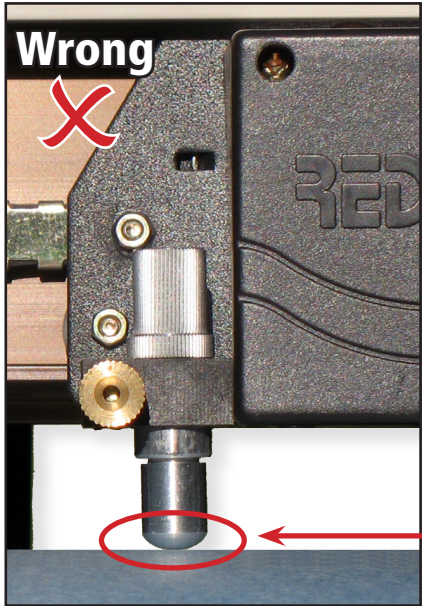
Wrong: Too much of the blade is extending out of the blade holder. This will damage the blade and Teflon strip. It will cause very poor cuts and major tracking issues.



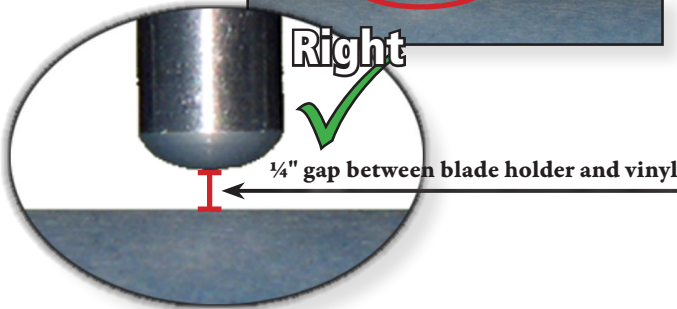
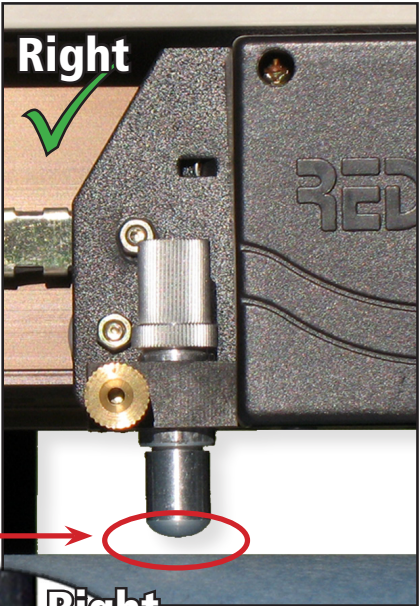
Right: This is the proper amount of blade extending out from the blade holder, about the thickness of a credit card or less. It is just enough to cut the vinyl but not cut the carrier paper.



How to Install Your Blade Holder



To install the blade holder correctly: With the cutter turned OFF, slide the blade holder into the circular tool carriage with the blade pointing down to the vinyl. Only slide it far enough down so that there is ¼ inch gap between the bottom of the blade holder and the top of the vinyl. When you have reached the ¼ inch separation, gently hand tighten the brass round nut to hold the blade holder in place. DO NOT OVER TIGHTEN!



FEATURE COMPARISON CHART FOR VINYL EXPRESS LXI™ SOFTWARE

		Expert	Master	Master Plus	RIP
Expert 19	Design Central Interactive Toolbox	•	•	•	•
	Cloud Window Tools	•	•	•	•
	Online SAI Cloud File Storage	•	•	•	•
	Import-Export CASmate/Inspire/Gerber/50+ file formats	•	•	•	•
	Fill/Stroke Editor with Transparent Fill Option	•	•	•	•
	Fonts on the Fly/True Type/Type 1/FlexiFonts/CASmate Font Support	•	•	•	•
	Horizontal/Vertical/Arc/Block Text, Text on a Path	•	•	•	•
	Onscreen Kerning, Define Kerning, Kerning Presets	•	•	•	•
	Vinyl Cutting/Cut by Color/ Color nesting/ Registration Marks	•	•	•	•
	Interactive Cutter Control/Auto-Weld/Auto-Trap/Poll Size	•	•	•	•
	Automatic Tiling	•	•	•	•
	Bezier Path Tool/Freehand Drawing Tool/Path Editing Tools	•	•	•	•
	Draw Shapes: Rectangles, Ovals, Polygons, Starbursts, Advanced Borders	•	•	•	•
	CMYK/RGB/LAB/HSB/Sport Color Support	•	•	•	•
	Effects: Weld/Cut out/Common/Exclude Common/	•	•	•	•
	Inline-Outline/Contour/Multiple Contour Cut	•	•	•	•
	Design Central Interactive Toolbox	•	•	•	•
	AutoTrace Vectorization/TWAIN Scanning/Centerline Trace Vectorization	•	•	•	•
	Multiple Undos/Redos	•	•	•	•
	Object Tools: Rotate/Mirror/Resize/Duplicate/Step and Repeat	•	•	•	•
	Distort/Drop Shadow/Smooth Shadow	•	•	•	•
	NEW FEATURES				
	Cleave by Path	•	•	•	•
	Inter-Leave Nesting	•	•	•	•
	Multiple Passes, Various Settings	•	•	•	•
Master 19	Stripes/Colors Trapping/Fuse		•	•	•
	Dimensions/Labels, Auto Dimension		•	•	•
	Graphic Styles/Text Styles, Repeat Last Command		•	•	•
	2 and 3 Point Circles		•	•	•
	View Multiple Layers/Object Hierarchy Access		•	•	•
	Contour Cut Mark for Desktop Print & Cut Workflow		•	•	•
	Color Trapping/Picture Cut/CASmate Style Tracing		•	•	•
	Rasterize/Color Mode/		•	•	•
	Bitmap Marquee/Bitmap Eraser/Bitmap Move		•	•	•
	Transparent Bitmaps in all Color Modes		•	•	•
	Repeat Last Command		•	•	•
	Gradient Fills		•	•	•
	Graphic Styles		•	•	•
	NEW FEATURES				
	Rectangle to Contout Cut Marks		•	•	•
Master Plus 19	Enhanced Smart Nesting		•	•	•
	Cut by Layer		•	•	•
	New Artwork Approval Tool			•	•
	Color Trace Vectorization			•	•
	Pattern Fills			•	•
	Templates: Apply, Create & Edit			•	•
	Job Estimation			•	•
	Fans, Arrows, Parametric Shapes			•	•
	Text Spacing, Insert Symbol, distribute Objects			•	•
	Effects: Blend/Separate Overlap			•	•
	Bitmap Filters: Reduce Noise, Blur, Sharpen, Levels, Brightness & Contract, etc.			•	•
	Bitmap Color Editing Tools: Bitmap Lasso/Magic Wand/ Crop/Stamp			•	•
	Rhinestone Wizard engraving fills			•	•
	NEW FEATURES				
	Trim Marks			•	•
LXi RIP 19	Page to Contour Cut Marks			•	•
	Enhanced Auto Tiling			•	•
	RIP&PRINT engine for large format digital printing				•
	Large format Print & Contour Cut Support				•
	True Shape Contour-Cut Nesting				•
	Automatic Job Nesting/Separation Nesting/Manual Job Nesting				•
	CleanColor PureHue Enhancement/Stochastic Gradient Enhancement				•
	Add Choke or Bleed for White and Metallic Spot Channels				•
	Custom Spot Color Matching Advanced color management tools				•
	ICC Profiles, 16-bit rendering, WYSIWYG Color Correction				•
	Color Adjustment Curves				•
	NEW FEATURES				
	RIP & PRINT Smart Nesting				•
	RIP & PRINT Ruler				•
	RIP & PRINT Copy Counter				•